

The Tollgate Farm News

VOLUME 29

ISSUE 3

MARCH 2023



MSU Tollgate Garden Volunteers General Meeting On Zoom

**Thursday, March 16, 2023
7:00 PM**

Late Winter Pruning

Join Tollgate gardeners and supporters on Zoom to learn how to get a head start on the growing season, to improve the landscape by pruning during winter dormancy. Janet Macunovich and Steven Nikkila will cover what to prune, how and when to ensure beautiful bloom, good shape, manageable size, and healthy trees and shrubs.

Janet and Steve have 40 years of experience as professional gardeners and trainers. They love to share what they've learned in thousands of gardens about practicality, beauty, fun and simplicity. Their extensive website, [Garden A to Z | Gardening tips, landscaping ideas, choosing plants, garden solutions](#), is full of tried-and-true ideas that they've developed or learned from other gardeners, and researched to help others grow.

Recently retired from hands-on garden installations, they offer webinars on all things gardening. Now is a perfect time to consider signing up for the fourth year of Garden A to Z online webinars. Details are at [Garden A to Z | Subscribe to Webinars](#).

TOLLGATE GARDEN VOLUNTEER IMPORTANT DATES AND EVENTS					
MAR	MEETINGS		APR	MEETINGS	
7	TGAC Meeting – Zoom	7:00 pm	4	TGAC Meeting – Zoom	7:00 pm
16	TGV General Mtg – Zoom	7:00 pm	20	TGV General Mtg – Zoom	7:00 pm
MAR	WORKDAY ACTIVITIES		APR	WORKDAY ACTIVITIES	
4	Pruning (Cancelled)	9:00 am	1	12 Mile/Pond	9:00 am
11/12	MapleFest (no workday)		8	Easter Weekend/Demo	9:00 am
18	Pruning/Grass Cut Back – All	9:00 am	15	Office/Entrance/Rain	9:00 am
25	Pathway/Demo Mulching	9:00 am	22	Rose/Heritage	9:00 am
			29	Children's/Xeriscape New Volunteer Orientation Pancake Brunch	9:00 am 9:00 am Noon

The Tollgate Farm News

A Special Thanks!

To all of you who donated to help the Tollgate Gardeners make Tollgate a more beautiful place - your donation is greatly appreciated! The support you have provided will continue to help our program prosper and grow. Thanks again and Happy Gardening!

Cherry Lee Baker
Linda Belanger
Michele Berry
Bonnie L. Boak
Mary Bohner
Anne Bolz
Abigail Brooks
Carole Budd
Pat Coppersmith
Judy Culkin
Thomas Culkin
Pat Dalter
Wendy Duvall-Angelocci
Sue Grifor
Gayle Gullen
Jillian Hall
Eric Halttunen
Lori Heiden

Anne Horaczek
Beverly Hydo
David Komraus
Vickie Krause
Tracy Krauss
Martha Larsh
Lynette Leroux
Barbara Macek
Richard Macek
Donald Millington
Jamie Murphy
Therese Nagi
Hans Neuroth
Linda Neuroth
Anthony Nolosco
Suzanne Ocko-Halttunen
Margaret Palmer
George Popovich

Joseph Pyden
Denise Reinfelt
Robert Savageau
Pamela J. Scott
Julie Semroc
Eric Simmons
Margaret Simmons
Stephen Smith
Dawn Snook
David Snook
Jackie Swenson
Carolyn Volk
Jeff Volk
Debra Westermann
Kurt Westermann
Xiaohui (Kathy) Zhong



Photo from MSU Extension website

The Tollgate Farm News

FROM THE TOLLGATE FARM MANAGER

GREETINGS

Roy Prentice



Greetings all!

March is maple syrup season! The 2023 Tollgate maple syrup season is underway! The season started fast with weather conducive for sap flow in mid-February. Warming temperatures roused our sleepy maple friends and now the sap has really started to move. A recent day produced 600 gallons of sap! The Reverse Osmosis machine is a huge help. The RO machine extracts water from the sap and concentrates sugars. The enriched sap is then sent to the evaporator for final cooking. The RO reduces the time that the sap spends in the evaporator by 60% or more saving time and firewood. Lots of work goes into making maple syrup. Many thanks to Richard, Kurt, Gayle, Kenn, Annie, Adam, David, Bob, and the many other volunteers that make the season possible.



The steam rising from the sugar house is a true sign of spring.

All of Tollgate's staff and many volunteers are looking forward to the 2023 MapleFest. The event will be held this weekend on March 11 and 12. Over 600 visitors are expected to come to the farm and enjoy two spring-ish days learning about collecting sap and making maple syrup. Hayrides, goat scratching, and educational displays are all part of the planned festivities. Of course, there will be lots to eat!

The donut making machine will again be put through its paces and is expected to make 100's of donuts! The event is a great way to usher in spring.

Many groups have visited the Tollgate sugar bush this season. Lots of field trips. Education director, Ellen Koehler, has been working hard to bring the wonder of Tollgate maple syrup making to youths throughout Southeast Michigan.

Despite our recent heavy snow, winter is beginning to lose its grip. There are many signs of spring around the farm. Bluebirds, sandhill cranes, a bald eagle, and even the lowly red-winged blackbird all tell that spring is here.



Not wanting to be left behind, Tollgate's plants are showing signs of life. The daffodils are emerging, buds are swelling, and volunteers will soon be returning to the gardens. I appreciate the

dedicated individuals who help make the gardens special. I look forward to better days ahead in the Tollgate gardens.

I hope to see you soon around the farm,
Roy

The Tollgate Farm News



Notes from the President
Renee Cottrell

"No winter lasts forever; no spring skips its turn."

-Hal Borland, American writer, journalist, naturalist

We were all caught up in the late February warming trend only to have Mother Nature remind us who is in control. I hope to get rolling on our scheduled work Saturdays with group activities focused on early spring activities after the Maplefest event, including grass cut back, rough mulching of paths and rescheduling our pruning activities. Look for the reminders in your e-mail. Active members who are not available on our Saturday group activity day and looking for garden assignments to do independently should contact me or Roy for information throughout this season.

We would love to expand our membership and active gardeners. The Tollgate Garden Volunteers welcome any interested gardener; you need not be a Master Gardener to join. If you have friends, neighbors or relatives that are interested in gardening consider inviting them as a guest to observe a Saturday work day. This would allow them a chance to tour the gardens, observe the activities of a typical work day and speak with other volunteers on what is involved in being a Tollgate Garden Volunteer. We can then guide them through the MSU Volunteer Selection Process if they wish to join!

Reminders:

- If you are not getting email notices you may want to check your Spam folder.
- Update your 2023 Tollgate Garden Volunteer membership ASAP to stay in the loop on important e-mail updates. Select the appropriate membership status and return those forms!

- Respond to the specified contact person or **my** e-mail link on the weekly activity e-mails if you have any questions - rmcottrell4@att.net - for a quicker response (*don't use the reply button*)
- AGL's/Garden Teams - Consider sending in your garden plans/budgets this month if you have special work items this season that may need Roy and his equipment to accomplish or need to get approval for mail order purchases. The next approval meeting is at the April 4th TGAC meeting. The sooner we know, the sooner we can confirm approval and schedule requested work.

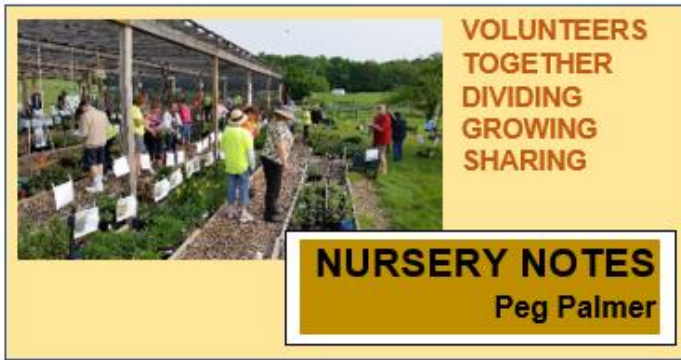
As always, I invite Active members interested in joining a dedicated team for one of the many garden experiences here at Tollgate, to contact me for further information. I will be happy to introduce you to the existing team leader or tour the site with you for an experience that fits your interests. We have sun, shade, shrubs, perennials, annuals and more. All are great learning experiences with support from TGAC and experienced members. All areas are in need of more team members! See the garden list in this newsletter for more details to see if your interests fit the needs of these teams.

Spring is coming! And so are the busy months for all our garden areas. We get to shake off the colder temps, assess the upcoming shoots and plan for potential plant sale donations from your gardens. Check out the other articles in this issue for the latest news and we hope you Zoom in for the membership meeting on March 16, 2023 at 7 pm.

Thank you for being a Tollgate Garden Volunteer.

Renee Cottrell, Adv.MG, President

The Tollgate Farm News



various reasons (primarily plants that are invasive, poisonous, or not Michigan hardy), but there may be other desirable plants that we should add to our stock list.

Opening day for the Nursery will be Saturday, April 8... look for more information closer to that date that will provide links to the PLANTS WANTED list and directions for dropping off your donations in the Nursery.

Please store your donations at home until the nursery is open.... if you are unable to keep donations at home, please contact me to make special arrangements for early drop off (palmermargaretanne@gmail.com).

PLEASE NEVER LEAVE DONATED PLANTS IN THE NURSERY WITHOUT CLEAR IDENTIFICATION!!

Are you interested in learning more about volunteering in the Nursery at Tollgate? It provides an opportunity to learn about lots of different plants, as well how to maintain healthy perennials in a pot, while working to benefit all the Tollgate Gardens.

Contact Peg Palmer for more information at palmermargaretanne@gmail.com.



Photo provided by Mary Bohner (2022)

Finally, it's March! This is when Michigan gardeners start looking for the first signs of spring! But, unfortunately, all I can see in my yard right now is a heavy blanket of snow. I'm hoping that this is winter's last hurrah, and that spring is still just around the corner... Because the Nursery Team has lots on the "to do" list as March begins our preparations in earnest for the annual Spring Plant Sale. Our format for a plant sale is somewhat unique – rather than purchasing lots of tiny seedlings from a commercial grower, we have a tradition that is consistent with the Tollgate "farm" heritage. We focus on selling divisions from the Tollgate gardens, the gardens of Nursery team members, other Tollgate Volunteers and friends, as well as some plants propagated from seed by our Nursery Team members.

The Spring PLANTS WANTED list will be published mid- MARCH. This list prioritizes plants based on what we have sold in the past. Hopefully it helps you to identify some plants that you may have in your gardens that you can divide and share with the Nursery. This list includes almost 300 garden perennials that we have traditionally stocked and sold, including both the botanical (Latin) and common name. So, keep an eye on what is popping up in your garden in the coming weeks... Identify what may be ready to divide and provide some extra plant material to share with the Tollgate Nursery. If you have a great Michigan-hardy perennial plant in your garden that isn't listed, but you would like to donate, let me know. There is a list of plants that we do not stock for

The Tollgate Farm News



Well, we have had some warmer days, but also our fair share of ice and wind storms, and more snow. Normally we try to get out to the garden late March/early April to remove the black plastic covers, prep the beds, and maintain the irrigation, but we will need to see how this weather effects our timing this year. We will also need to either pull up the oat/pea cover crop or till it into the beds where we tried it for weed control.

Our transplants for cabbage – Capture, Integro, and Storage #4, onions – Powell and Redwing, leeks – King Richard, cucumbers – Corinto, hot peppers – Hungarian Hot Wax, Jalafuego Jalapeno, and Baron Poblano, kohlrabi – Kossak, and shallots – Ambition are all started in an MSU greenhouse and being well tended by Darby Anderson, Student Organic Farm Manager at MSU. She graciously offered to help us out again this year with our starts, even though she has moved from the MSU Tollgate Farm CSA to her new position. Thank you, Darby!

We will also be adding two new trellises, thanks to Roy's wonderful support and Brett's unsurpassed welding skills. We will have two 15' long, 8' tall, 1' wide masterpieces which will support our cucumber plants on one side, and hot peppers on the other, and which should be able to be easily moved to a new location once we are ready for crop rotation.

Once the sun starts to warm up the soil, our garlic shoots should start to appear – the first crop in our garden to emerge. The remaining

crops will not begin to be planted until April, with our heaviest planting work in mid to late May. We will start with beets and companion shallots, cabbage, and onions. Next come beans, carrots, turnips, and summer and winter squash with companion borage. Lastly, we will plant potatoes with companion marigolds, cucumbers, and hot peppers. Then we focus on pest management and weed control until harvesting begins, and of course continue to do so until the end of the season.

Our two workdays are Monday and Thursday every week, usually starting at 9AM weather permitting. We also have a Saturday work day in August to help with the heavy load of harvesting and preparing the produce for distribution. Currently, we have a good turnout expected for Mondays, but are light on Thursdays. If you are interested and available either day, please let me know.

All volunteers, whether Extension Master Gardeners, avid gardeners, or individuals interested in gardening and community service, regardless of experience level, are welcome to join the team once cleared through the MSU Volunteer Selection Process. We have an enthusiastic, fun, hard-working team, and plenty of rewarding opportunities to help those in need. Come check us out.

If you would like to learn more about volunteering at MSU Tollgate Farm, please contact Roy Prentice (prentic1@msu.edu, 248-347-3860 x251) or Carmen Hamilton (hamil466@msu.edu, 248-347-3860 x239) for more information.

Looking forward to greeting you in the garden very soon. Wishing all a safe, healthy, and plentiful 2023,

Kathryn Fitzpatrick

PAR Report continued on Page 7

The Tollgate Farm News

PAR Report continued from Page 6



Photos provided by Kathryn Fitzpatrick (2022)

The Tollgate Farm News

Member Spotlight

To encourage all members to wear their name badge when on-site at Tollgate, we will continue spotlighting a current member found wearing their badge, monthly in the newsletter. The name badge indicates your status as a garden volunteer and is very helpful to new members, as well as visitors. **The badges are in a box on the table in the Volunteer Center and have been updated as of March 1.** Please check the box first and then, if your badge is missing, there is a sign-up sheet nearby, and one will be made for you.



You are welcome to take your badge with you, or keep it in the box to grab each time you are on-site. We will be looking for volunteers wearing their badge on Saturday workdays and may ask to take your picture for the next newsletter.

NOTE: No member spotlighted in March – first workday cancelled.

Please Renew Your
Membership for
2023

If you haven't already
renewed your
annual TGV Membership
for 2023,
please do so as
soon as you can.
This will ensure
you never miss any
Tollgate gardening news!

Thank you!
Angie Carter

Tollgatemembers@gmail.com



The Tollgate Farm News

Tollgate Garden Volunteer Membership Levels

When you renew your TGV membership each year, we ask you to designate your status as an ACTIVE member or a SUPPORTING member. As a reminder, these designations mean the following:

ACTIVE MEMBER: Volunteer in the gardens on workdays or individual assignments, volunteer at events and projects on the site, receive all communication and participate in monthly meetings.

- All active volunteers must go through the MSU Volunteer Selection Process (VSP) screening to work on site and maintain their VSP status yearly.
- Extension Master Gardeners (EMG) are screened through the VSP process either at the start of the program when you take the EMG class or when you renew your EMG certification/VSP update each year. If you are an active/current EMG and choose to volunteer at Tollgate, your VSP status is complete.
- Previously certified EMGs who decide to let their certification lapse can still volunteer on the site, but must go through the VSP screening on an annual basis. We have onsite personnel who can help you complete the process.
- If you are an active MSU volunteer through another program or site and have maintained an active VSP status, then your VSP status is complete
- Individuals who have not gone through the VSP screening, will need to pursue the VSP screening before they can be an active volunteer at Tollgate (or at any MSU site or program). We have onsite personnel who can help you complete this process.
- Note that once an individual has participated in the initial VSP screening, they need only approve a background check in subsequent years. No need to obtain references and other activities that are required with the initial VSP screening.

SUPPORTING MEMBER: Support the volunteers and participate in monthly meetings.

- Notified regarding monthly membership meetings.
- Informed about Tollgate events via the Farm News newsletter and other informative e-mail notifications.
- Supporter status will **not** allow you to participate as a volunteer in the garden maintenance activities, maple syrup project or any events on site.
- Return to an "ACTIVE" status at any time by completing the VSP screening process.

A donation is NOT required to renew your membership. All donations are greatly appreciated and go into our account to maintain the gardens.

The Tollgate Farm News

Welcome New Tollgate Garden Volunteer Members

We are glad you are with us! Please feel free to contact Renee Cottrell with any questions on our planned activities and schedules for 2023. You may email your questions about the gardens and volunteering at rmcottrell4@att.net. This is a wonderful place, full of educational opportunities, with personal satisfaction and social connections as reward for volunteering. Our membership holds a large amount of collective knowledge and expertise that is willingly shared with a strong team approach to make every effort to direct new members to areas of most interest on the site. We want to guide you to a great experience with the Tollgate Garden Volunteers. Check out these links to start exploring your garden opportunities:

Garden Orientation PDF

<https://www.canr.msu.edu/tollgate/uploads/files/Tollgate%20Garden%20Volunteer%20orientation%20draft2.pdf>

Tollgate web pages for the Gardens

<https://www.canr.msu.edu/tollgate/gardens/>

2023 Tollgate Garden Volunteer Activity Calendar

<https://www.canr.msu.edu/tollgate/uploads/2023%20Tollgate%20Garden%20volunteer%20Activity%20calendar.pdf>

Other volunteer info at Tollgate

<https://www.canr.msu.edu/tollgate/volunteering/>



Photo provided by Roy Prentice

The Tollgate Farm News

Gardens in Need of Team Members and Area Garden Leaders (AGLs)

Garden teams, responsible for specific gardens, need members and AGLs to cover the care of the many gardens here at Tollgate. All teams' welcome new members and some need immediate help for 2023. Being on a team does not exclude you from the general Saturday workdays. As "Active Status" garden members get more familiar with the various garden experiences, they sometimes find a particular garden or team that meets their gardening interests. Some teams have more weekday opportunities for those unable to participate on the weekends. Please consider the following gardens and contact Renee Cottrell at rmcottrell4@att.net if you are interested in becoming a team member:

Hosta Garden: New AGL Lori Heiden is looking for other shade lovers to be on the Hosta garden team.

Children's Garden Collection: All areas in need of members to assist: Entrance, Fence, Pond, East Tollbooth, Native prairie, Vine maze. Colorful, interactive learning areas catering to the young visitors in need of extra hands to keep the area maintained. Weekday work schedules available. Multiple AGLs for these areas, contact Renee to be put in touch with your area of interest.

Demonstration Gardens: Team AGLs and members needed. These smaller collections of gardens can be acquired and managed as smaller plots. Located in a full sun area, some have already received regular maintenance from independent volunteer work. Gardens are irrigated. Renee has notes on these locations that provide a variety of learning experiences.

Office Gardens: AGL Susie Sherman welcomes someone to co-lead and has need for team members. Most information on plants and work needs are documented and up-to-date. Renee can orient any interested members to this area that is low maintenance, once spring clean-up is complete.

Heritage Garden: AGL Susie Sherman welcomes someone to co-lead and team members for this garden with the specific theme consistent with late 1800's plant types. This is a highly visible area with events on the property.

Rose Garden: Team members needed under guidance of experienced AGL Joe Pyden. Nice opportunity for learning many aspects of rose care in a brand-new garden renovation as phase 2 is initiated this season..

Xeriscape Gardens: Team members needed to work with long-standing AGL Marilyn Alimpich. Loads of plant variety makes for a wonderful learning experience.

Entrance Garden: AGL Laurey Konjarevich needs team members for multilevel garden display at south entrance. Large plant variety offers many learning opportunities..

Sakura Japanese Garden: This is a smaller garden area surrounding a tea house structure, with a remote location compared to other gardens. AGL(s) and members are needed, especially in early spring. Contact Roy for details on this area.

Article continued on Page 12

The Tollgate Farm News

Article continued from Page 11

Constructed Wetlands (aka “The Pond”): Dave Komraus is the AGL for multiple areas that make up this very large area. Smaller work areas can be created for interested team members. Additional team members needed for 2023 season.

Nursery: AGL Peg Palmer welcomes new team members for this well-established team, key to our annual plant sales. Interesting learning experiences with plant identification, potting, and aspects of maintaining nursery potted plants.

Plant-A-Row (PAR) Garden: AGL Kathryn Fitzpatrick leads this team on weekday activities in the planting, maintenance and harvesting activities of a large community garden. News team members always welcome.

High Density Orchard: AGL Clay Ottoni offers specialized experience in small fruit/orchard management.

Rock Ledge Garden: AGL(s) and team members needed. Rock garden plantings require some agility to conduct maintenance on a slope. This area may be impacted by repair of steps this season. See Renee for more information.

Enabling Garden: This garden may be under renovation for 2023 season. AGL(s) and team members needed. This is essentially a container garden with special planter styles for those with special mobility needs. See Renee for plans.

Attention Area Garden Leaders (AGLs)



Thanks to all who have committed to being AGLs for the Tollgate gardens. You make our gardens so very welcoming to all visitors, staff, and volunteers on the site.

Your Tollgate Garden Advisory Committee (TGAC) is currently approving 2023 garden budgets. If you haven't yet done so, please complete the **Garden Project/Budget Planner Form**, page 22 at the back of this newsletter. Email to Marilyn Alimpich, TGAC Vice-President, at masoleil@sbcglobal.net. **We would like to approve all 2023 budgets no later than our May 2, 2023 meeting.** This

will assure that the funds you need for your garden's purchases will be approved. Note that this is an annual process.

Also provided, on page 23 at the back of the newsletter, is the **MSU Reimbursement Worksheet** which must be submitted to Roy Prentice with your receipt and/or credit card invoices attached. **Reimbursement requests must be submitted for approval within 90 days of purchase**, so please submit to Roy well before the end of 90 days.

Photo provided by Kathy Johnson

The Tollgate Farm News

Maple Syrup Season is in Full Swing!

Tollgate's dedicated maple syrup volunteers have been hard at work in the woods and sugar house recently making lots of yummy maple syrup. Sap for making syrup flows only in the early spring, so March is the perfect time to make syrup! The maple volunteers work hard not only making syrup, but also supporting lots of field trips and Tollgate's big MapleFest event (see next page). They really enjoy sharing their love of making syrup with visitors. If you are on the farm this month, feel free to check out the activity in the woods and sugar house.



Photos provided by Roy Prentice

The Tollgate Farm News



- How does sap become maple syrup?
- What temperatures are needed to make the sap flow?
- How do you tap a tree?

Join us for an exploration of Michigan's sweetest winter crop, maple syrup!

Identify and tap a maple tree, tour the sugar shack, explore fun maple-themed activities, take a wagon ride, taste maple sap, syrup, and sugar, and explore maple tools and technology. Enjoy an 'all-you-can-eat' pancake celebration in the historic 19th-century barn. Pancakes, sausage, and of course, real maple syrup will be provided!

Hourly Limited Timeslots from 9 am – 1 pm Saturday and Sunday
\$15 per person

Limited Seating

Pre-registration is required. Registration is nonrefundable. Please dress for the weather.



Help us make Maple Fest a success!

We need volunteers.

Tollgate is in need of volunteers ages 16 and older on March 11th and 12th for Maple Fest 2023.

We invite you to volunteer to help provide MSU Tollgate visitors with an engaging and educational look at the history, science, and art of maple sugaring. Volunteers like you make it possible for Tollgate to host events such as Maplefest- we greatly appreciate your investment of time and energy!

Click below to learn more or to sign up to help with easy, hands-on education activities.

We especially need help on Sunday. Supplies, easy instructions, and the satisfaction of being a Tollgate Maplefest volunteer provided!

If you are interested in attending: [Maplefest Event Registration](#)

If you would like to volunteer at the event: [Maplefest Volunteer Signup](#)

The Tollgate Farm News

WAITING FOR SPRING



Photos provided by Renee Cottrell

The Tollgate Farm News

SNOW IN MARCH



Photos provided by Roy Prentice

The Tollgate Farm News

RED TWIG DOGWOOD BY THE POND



Top photo provided by Roy Prentice (2021)
Bottom photo by Renee Cottrell (2021)

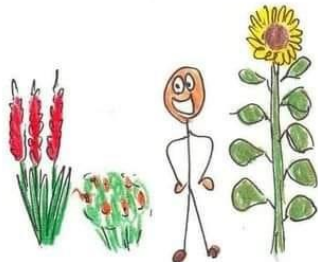
The Tollgate Farm News



Winter is on my head, but
eternal spring is in my heart.
-Victor Hugo



The secret to my "green thumb":



Planting SO MANY plants no one
can tell that half of them died.

Joseph Tychonievich



Garden quotes submitted by Kathryn Currier & Nancy Powell

The Tollgate Farm News

Take a Tollgate Picture

Next time you are volunteering at Tollgate, consider taking some pictures for the Tollgate Calendar. The preferred format is jpeg, landscape files. **It is important to send high-resolution photo files at full or actual size.** Send photo files in separate emails, if necessary, to Judy Warren, Tollgate Calendar Editor at TGFarmPhotos@gmail.com.

Photos are also appreciated for the monthly Farm News. Photo files can be “small-sized” and sent to napowell77@gmail.com.

Every season is magical at Tollgate. Think about capturing that magic in a photo for the Tollgate Calendar or Farm News.



Top left photo provided by Dave Komraus
Bottom left, top and bottom right photos by Roy Prentice
Middle right photo by Norm Powell
(All photos 2021)

Tollgate Volunteer Information

Activity Days: January - October

- Activity Day hours are 9:00 am – Noon, unless otherwise noted on the Activities section of the first page of the newsletter and the full year calendar (next page).
- Lunch will be provided on scheduled workdays.
- Active members will continue to get email reminders of these activities.

*We strongly recommend you bring your own tools for your garden activities. All tools borrowed from the toolshed **must** be sanitized with a 10% bleach solution prior to returning the items to the toolshed after use.*

TIP: If you aren't getting **The Tollgate Farm News** email, check your SPAM folder

Volunteer Activity Day and Meeting information will be communicated by email

Garden Tools Available for Use at Tollgate

Spades	Leaf Rakes
Garden Rakes	Garden Hoe
Brooms	Long-Handled Garden Forks
Wheelbarrows	Weed Buckets

Suggested Gardening Implements to Bring from Home as Needed

Trowel	Plant Division Forks
Pruners	Shrub Rake
Loppers	Sun Screen/Insect Repellant
Garden Scissors	Garden Gloves
Hand Saw	Knee Pads
Weeding Implement	

Tollgate Garden Advisory Committee (TGAC)

Farm Manager – Roy Prentice

248-347-3860 Ext.251 prentic1@msu.edu

President	Renee Cottrell
Vice President	Marilyn Alimpich
Secretary	Theresa Bridenbaugh
Treasurer	Karen Harris
Membership	Angie Carter
Communications	Kathy Johnson
Programs	Jackie Stengel
Hospitality	Teresa LaRosa
Farm News Editor	Nancy Powell

- The TGAC meets monthly virtually on Zoom (until further notice) on **the first Tuesday of the month at 7:00 PM**. All Tollgate Garden Volunteer members are welcome to attend and should contact Roy Prentice for meeting link.
- Contact information for individual TGAC members and Area Garden Leaders (AGL) are available by contacting Roy Prentice to have message or contact forwarded for response. Contact info can also be found in the Garden Binders in the Volunteer Communication Center.
- Tollgate Volunteer Membership is renewed annually. The 2023 Tollgate Garden Volunteer membership is valid from **January 1, 2023 to December 31, 2023**.

For membership questions or to update your current membership information, email tollgatemembers@gmail.com

For general information and questions, contact Roy Prentice or see Website: <http://tollgate.msu.edu/volunteering/>

MSU Tollgate Farm and Education Center



28115 Meadowbrook
Novi, MI, 48377-3128
tollgate.msu.edu
Contact Roy Prentice:
248-347-3860 ext. 251

1-28-23 for 2023

MSU Tollgate Garden Volunteers
Activity Calendar-2023

January	February	March
3-TGAC via Zoom 7:00 PM 14-AGL Planning Meeting 10:00AM 19-TGV General Meeting 7:00PM via Zoom 	7-TGAC Meeting via Zoom 7:00 PM 16-TGV General Meeting 7:00 PM via Zoom 	7-TGAC Meeting via Zoom 7:00 PM 16-TGV General Meeting 7:00 PM via Zoom Activity Days 4-Pruning 9:00AM 11/12-Maplefest no work day 18-Grass Cut Back-all 9:00AM 25-Pathway/demo mulching 9:00AM
April	May	June
4-TGAC Meeting 7:00 PM 20-TGV General Meeting 7:00 PM  Activity Days 1-12 Mile/Pond 9:00AM 8-Easter weekend Demo 9:00AM 15-Office/Entrance/Rain 9:00AM 22-Rose/Heritage 9:00AM 29-Children's/Xeriscape 9:00AM New volunteer orientation 9:00AM Pancake Brunch 12:00PM	2-TGAC Meeting 7:00 PM 18-TGV General Meeting 7:00 PM  Activity Days 6-Nursery/plant division 9:00AM 13-Farmhouse 9:00AM 20- Shade/Hosta 9:00AM 27-Memorial Weekend Rockledge/planting 9:00AM	6-TGAC Meeting 7:00 PM 15-TGV General Meeting 7:00 PM  Activity Days 3-Spring Plant Sale 9am-2pm 10-Rose/Heritage 9:00AM 17-Office/Entrance/ Rain 9:00AM 24-Pond/12Mile 9:00AM
July	August	September
11-TGAC Meeting 7:00 PM  Activity Days 1- Demo garden 9:00AM 8-Children's/Xeriscape 9:00AM 15-Hosta 9:00AM 20-TGV Garden Open House 6-8:30PM (Thursday-no membership mtg) 22-Heritage/Rain 9:00AM 29-Rose/Rockledge 9:00AM	1-TGAC Meeting 7:00 PM 17-TGV General Meeting 7:00 PM  Activity Days 5-Entrance/Office 9:00AM 12-Pond 9:00AM 19-Nursery/plant division 9:00AM 26-PAR harvest 9:00AM	5-TGAC Meeting 7:00 PM 21-TGV General Meeting 7:00 PM  Activity Days 2-Labor Day Weekend TBD 9- Demo 9:00AM 16-Nursery Fall Plant Sale 9:00-12:00 23-Xeriscape/Children's 9:00AM 30-Farmhouse/Shade 9:00AM
October	November	December
3-TGAC Meeting 7:00 PM 19-TGV General Meeting 7:00 PM Activity Days 7/8-Pumpkinfest  14-Plant Division & potting 9:00AM 21-Pond Clean Up 9:00AM 28-Fall Clean up 9:00AM	4-Recognition Dinner 4:00PM 7-TGAC Meeting 7:00PM Activity Day 11-Rose winterizing 10:00AM 23-Thanksgiving 	5-TGAC Meeting 7:00 PM 7-Hanukkah, 25-Christmas, 26-Kwanza 

**All activity days, UNLESS OTHERWISE NOTED, begin at 9 am and are subject to change. Please consult the newsletter or call 248 347-3860 ext 251 or look for e-mails for updated information.

Visit on web: www.tollgate.msu.edu

MSU TOLLGATE VOLUNTEER SIGN IN

LOGGING YOUR VOLUNTEER HOURS HELPS US TELL TOLLGATE'S STORY TO THE MSU COMMUNITY

- USING THE CAMERA ON YOUR SMART PHONE, HOVER OVER THE QR CODE
- A LINK WILL APPEAR
- IF NO LINK APPEARS, YOU WILL HAVE TO DOWNLOAD A QR READER APP
- CLICK ON THE LINK TO THE GOOGLE SIGN IN PAGE
- COMPLETE WITH YOUR INFORMATION
- THIS SIGN-IN PROCEDURE DOES **NOT** LOG YOUR HOURS WITH MSU EXTENSION



NOTE: If you prefer to complete your sign-in on your computer, this link will take you to the site:

[Tollgate Volunteer Sign In 2023](#)

MSU Tollgate gets a lot of credit for all the wonderful volunteers that tend the gardens, make maple syrup, and support programming. The farm would not be the unique place that it is without the support of many willing hands. Traditionally, Tollgate has relied on a sign-in sheet in the volunteer center to capture the hours of volunteer service. Many of our volunteers who work in the maple project or distant gardens may not visit the volunteer center when they are on the farm. To capture all of our volunteer hours, we are trying a new recording system. By following the instructions below and scanning the QR code, you can record your Tollgate hours online from anywhere. After you have scanned the code, you can even bookmark the link so that you can access the hours reporting form without the code.

Thank you for making Tollgate such a wonderful place! Roy

GARDEN PROJECT/BUDGET PLANNER

Plan Date:

Garden Name:

AGL/Co-AGL contact info **:

Describe any *special work* projects to be done in garden this season. (such as planting, pruning, divisions, special projects.-- OK if "none" are planned)

- 1.
- 2.
- 3.
- 4.
- 5.

List plants that can be divided for plant sale.

SPRING

FALL

- 1.
- 2.
- 3.
- 4.
- 5.

Proposed new/replacement Plants for Garden	Plan(purchase, division, donation)	Estimated Cost
	Total	\$

Submit additional pages if needed

Other Items Needed for the Garden	Plan	Estimated Cost
	Total	

Submit additional pages if needed

11/20/22

MICHIGAN STATE UNIVERSITY

REIMBURSEMENT WORKSHEET

ATTACH THIS FORM AND ALL RECEIPTS TO THE DISBURSEMENT VOUCHER

THIS FORM IS REQUIRED WHEN PAYMENT REASON CODE "1" IS USED ON A DISBURSEMENT VOUCHER

Reimbursements to MSU employees will be direct deposited

PAYEE

Name:

<small>(Last)</small>	<small>(First)</small>	<small>(MSU NetID)</small>
Faculty/Staff <input type="checkbox"/>	Graduate <input type="checkbox"/>	Undergraduate <input type="checkbox"/>
		Other <input type="checkbox"/>

Department:

Dept. Address:

Account Name:

DATE	BUSINESS PURPOSE/ITEM DESCRIPTION	TOTAL
TOTAL		0.00

ACCOUNTING LINE to be entered in the Disbursement Voucher e-doc (*required fields)

Account*	Sub Account	Object Code*	Sub Object Code	Project Code	Org. Ref. ID	Amount*
						0.00
TOTAL						0.00
<small>Must equal zero</small>						0.00



MSU Tollgate Garden Volunteers Membership Form

Please legibly print all entries. Thank you.

2023

Name _____ Address _____ City _____ MI Zip _____ - _____ Name you would like on badge, if needed	Date Submitted _____
	Telephone Number Day _____ - _____ Evening _____ - _____ Email _____

Choose **one only**:

Supporting member: I wish to support the volunteers and participate in monthly meetings but will **not** be participating *as a volunteer* in garden activities, projects or other events on the site.

Active member: I plan to participate *as a volunteer* in meetings, garden activities and/or other events or projects on the site and have or will complete the required Volunteer Selection Process.

Were you a Tollgate volunteer member last year? Yes () No ()

Are you interested in serving on a committee or garden project? Yes () No ()

If yes, please note below if you have a particular area of interest or skills to share.

A donation in support of the Tollgate Volunteer organization would be greatly appreciated (\$20 suggested). If you would like the newsletter mailed to you rather than emailed, please include an additional \$10 to cover postage.

Check here to have the newsletter mailed to you. ___

Make checks payable to: **Michigan State University**

Return to: **Tollgate Gardens Volunteer Office**
28115 Meadowbrook
Novi, MI 48377-3128

Questions: **Phone: 248-347-3860 Ext. 251**

Email: tollgatemembers@gmail.com

2023 Membership is valid from January 1, 2023 to December 31, 2023

Please read this Privacy Policy:

By filling out and submitting this form you authorize the Tollgate Garden Volunteers (TGV) and MSU to use your contact information to communicate with you via email, newsletters, and other formats. If you wish your email and other identification information to not be used by the TGV and MSU, please check this box (). (By checking this box, you will not receive email notification of workdays, or other volunteer opportunities, special events and educational opportunities, or the availability of the newsletter via e-mail.)

In the event of an emergency please notify:

_____ - _____

Name Phone